



0 100 200 300 FT

LEGEND

-  U-1 Single Family Residence
-  U-2 Apartment House
-  U-3 General Business
-  U-4 General Office Building

THE VILLAGE OF WOODMERE ZONE MAP

MAY 2015
ORDINANCE NO. 2015 - 19

MAYOR CHARLES E. SMITH

LAW DIRECTOR - FRANK CONSOLO

ENGINEER - EDWARD J. HREN

COUNCIL MEMBERS

BENJAMIN HOLBERT - PRESIDENT OF COUNCIL

SHERYL C. BLAKEMORE - CLERK OF COUNCIL

TENNYSON ADAMS ALBERTA FANNING

LISA BROCKWELL GLENDA TODD-MILLER

JENNIFER MITCHELL EARLEY CRAIG WADE

PLANNING AND ZONING COMMISSION MEMBERS

SETH YOUNG - CHAIRMAN

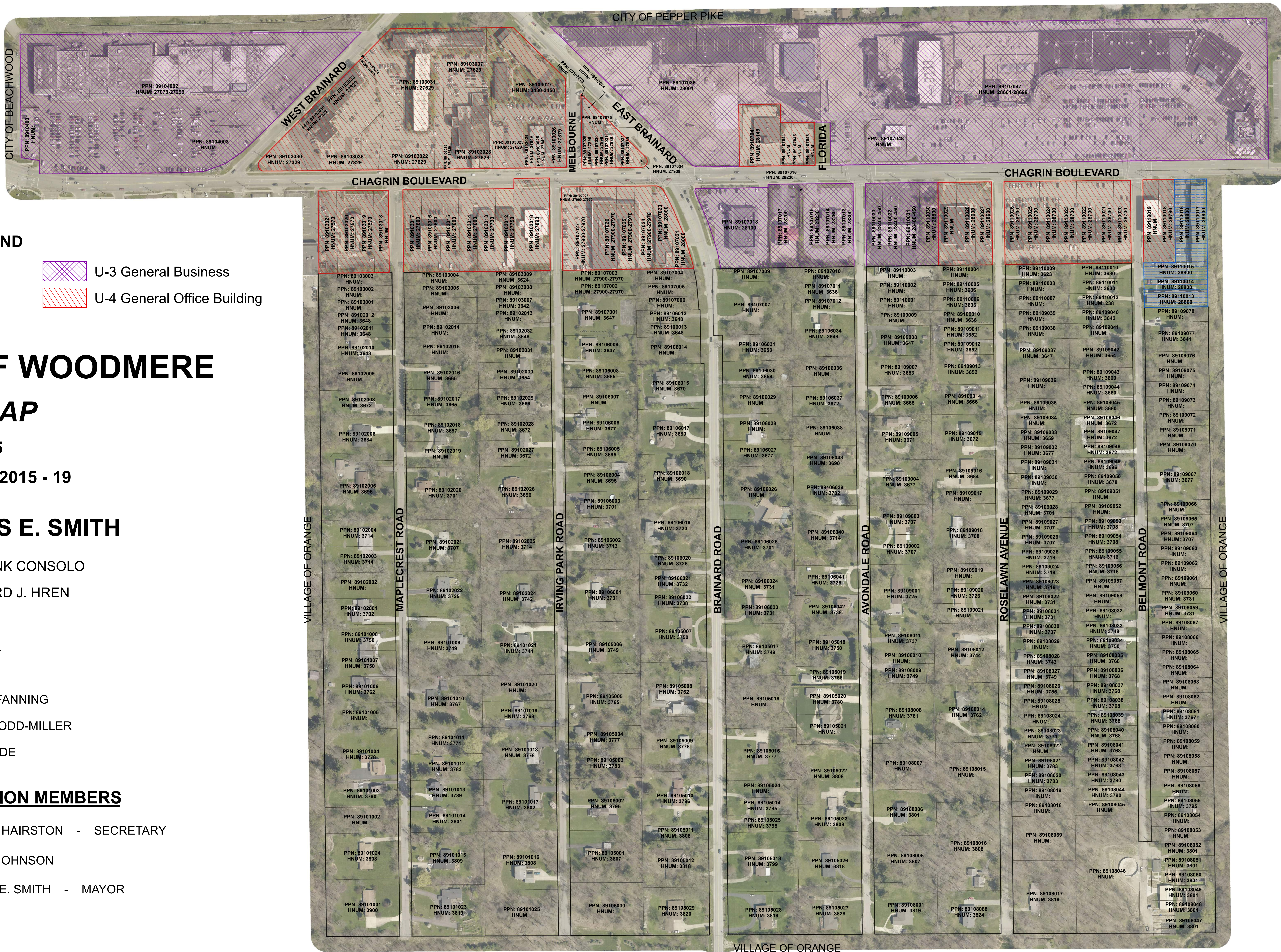
DEBORAH HAIRSTON - SECRETARY

TENNYSON ADAMS

EDWARD JOHNSON

BETTIE J. PERRY

CHARLES E. SMITH - MAYOR



MAP PREPARED BY:



Printed 4-24-2017

SOURCE DATA: THE VILLAGE OF WOODMERE, CUYAHOGA COUNTY GIS, & CHAGRIN VALLEY ENGINEERING, LTD.
MAP PROJECTION: NAD 1983 STATEPLANE OHIO NORTH FIPS 3401 FEET
AERIAL PHOTOGRAPH 2015 - PROVIDED BY CUYAHOGA COUNTY GIS